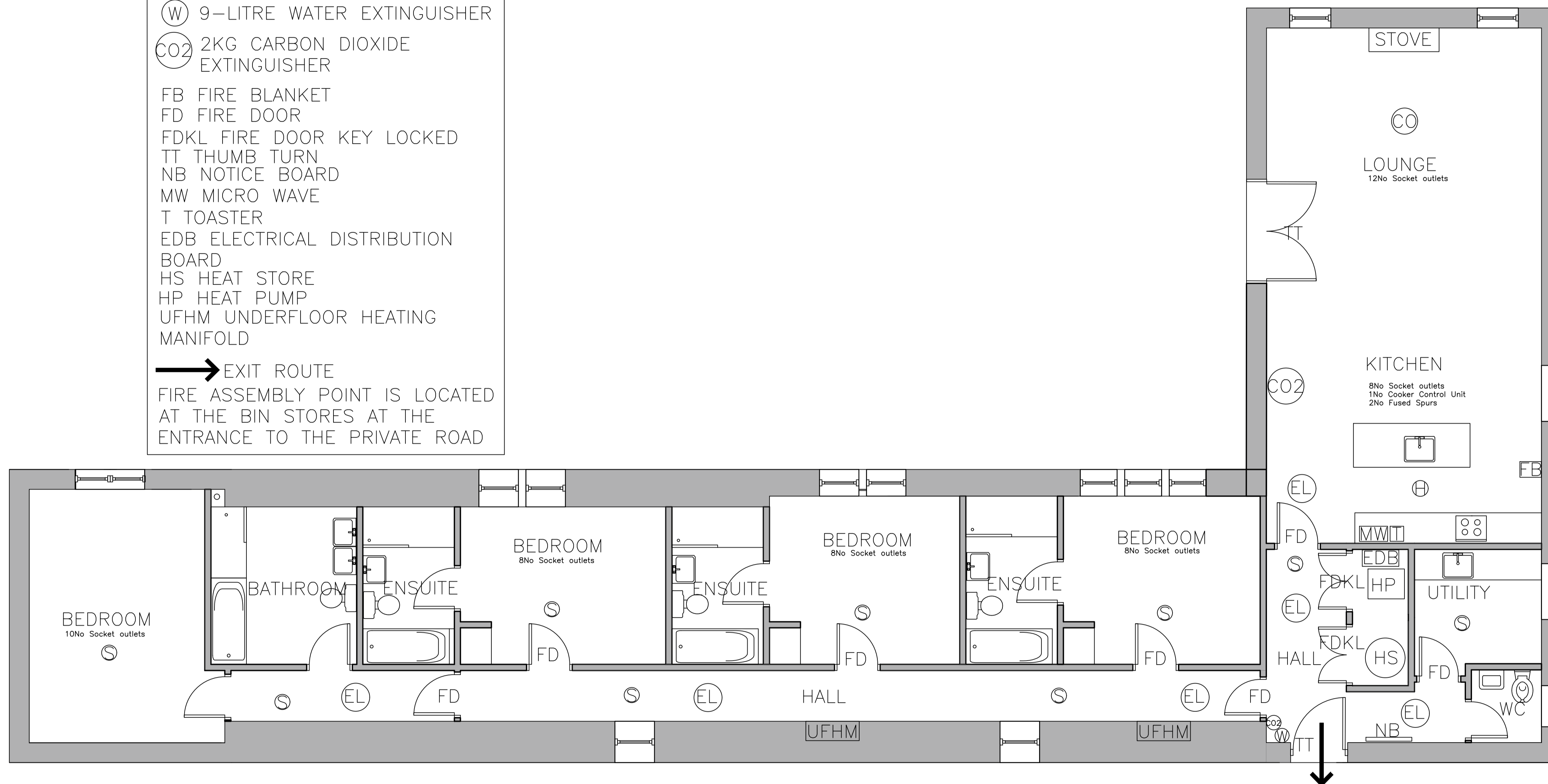


FIRE SAFETY LEGEND

- ⊙ SMOKE DETECTOR
- ⊕ HEAT DETECTOR
- ⊙ CO CARBON MONOXIDE DETECTOR
- ⊙ EL EMERGENCY LIGHT
EXTERNAL LIGHT □ E
- ⊙ W 9-LITRE WATER EXTINGUISHER
- ⊙ CO2 2KG CARBON DIOXIDE EXTINGUISHER
- FB FIRE BLANKET
- FD FIRE DOOR
- FDKL FIRE DOOR KEY LOCKED
- TT THUMB TURN
- NB NOTICE BOARD
- MW MICRO WAVE
- T TOASTER
- EDB ELECTRICAL DISTRIBUTION BOARD
- HS HEAT STORE
- HP HEAT PUMP
- UFHM UNDERFLOOR HEATING MANIFOLD
- EXIT ROUTE
- FIRE ASSEMBLY POINT IS LOCATED AT THE BIN STORES AT THE ENTRANCE TO THE PRIVATE ROAD



FLOOR PLAN

